



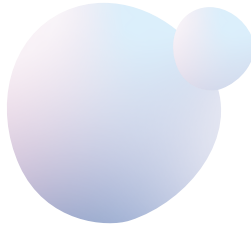
repromeda

CLINIC OF REPRODUCTIVE
MEDICINE AND GENETICS

PANDA

PANEL DIAGNOSTIC ANALYSIS

Planning a Healthy Future
with PANDA



Are You Planning to Have a Baby?

Discover if your future child is at risk for the most common hidden genetic diseases with the PANDA Preconception Genetic Test.

Why Choose PANDA?

PEACE OF MIND

Up to 4 out of 100 couples risk having a child with a severe genetic disorder. PANDA can help you avoid this.

SIMPLE PROCESS

All we need is a blood sample from you and your partner.



You can
count on
PANDA.

What is PANDA?

PANDA, short for Panel Diagnostic Analysis, is a cutting-edge genetic test tailored for couples planning to start a family. Whether you are trying to conceive naturally or through assisted reproductive technologies, PANDA can identify potential genetic risks that might affect your baby.

HERE IS HOW IT WORKS:



Blood Collection

Clinic staff will draw blood samples from you and your partner.



DNA Testing

Our advanced lab will analyze your DNA for genetic compatibility.



Results

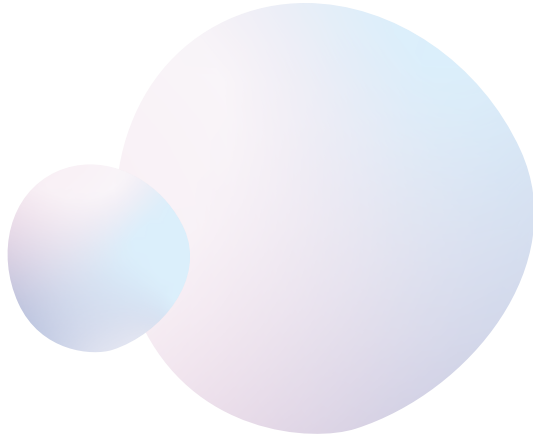
We will pinpoint potential genetic risks that could impact your child's health.



Consultation

If necessary, our expert clinical geneticist will discuss your results and guide you on the next steps.

4 weeks



Unfortunately, most partners find out about their genetic burden after the birth of the affected offspring.

Two Types of Tests

EXPLORE OUR COMPREHENSIVE TESTING OPTIONS

We highly recommend the [PANDA Carrier test](#) as the most extensive and dependable choice for understanding your genetic health. This test adheres to the American College of Medical Genetics and Genomics (ACMG) guidelines for preconception testing, making it ideal for all couples planning to start a family, even for those with a family history of genetic disorders.

While the [PANDA Infertility test](#) is perfect for couples eager to understand their genetic health better, it focuses on a narrower range of conditions than the PANDA Carrier test. It detects conditions such as cystic fibrosis and spinal muscular atrophy and uncovers genetic causes of infertility. Additionally, it provides valuable information about ovarian responses to hormonal treatments and potential risks associated with hormone replacement therapy after embryo implantation.





PANDA Carrier test

WHO SHOULD GET IT?

- » Couples wanting a comprehensive genetic health overview.
- » Couples with a family history of genetic conditions.
- » Anyone planning to start a family.

WHAT IT DETECTS:

- » Up to 110 common recessive genetic disorders.
- » Genetic causes of infertility and pregnancy issues.
- » Risks related to pregnancy and IVF treatment.
- » Thrombophilic mutations.

PANDA Infertility test

WHO SHOULD GET IT?

- » Couples wanting to understand their genetic health.
- » Couples struggling to conceive or facing repeated miscarriages.

WHAT IT DETECTS:

- » Common genetic disorders like cystic fibrosis and spinal muscular atrophy
- » Genetic causes of infertility. Risks related to pregnancy and IVF treatment.
- » Risks related to pregnancy and IVF treatment.
- » Thrombophilic mutations.

Why is Genetic Testing Important?

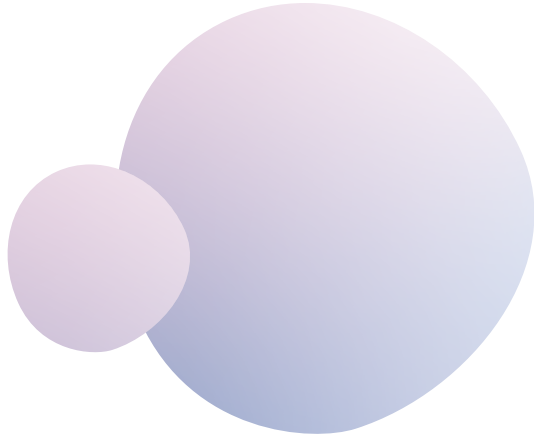
EACH OF US CAN BE A CARRIER OF A DISEASE

Understanding your genetic makeup is a powerful tool in family planning.

Each of us carries 2 to 10 genetic disorders. While some may have little impact on our lives, others, like cystic fibrosis or spinal muscular atrophy, can be severe.

If both partners carry the same genetic disorder, there is a **25% chance of passing it on to their child.**





PANDA helps you uncover these risks and take proactive steps to ensure a healthy baby.

How PANDA Can Transform Your Journey to Parenthood

PANDA is comprehensive genetic testing that not only prevents the transmission of genetic disorders but also addresses infertility issues by revealing underlying genetic causes. Our tailored approach ensures that your treatment is specific to your needs, increasing your chances of a successful pregnancy.



The most frequently asked questions

WHAT HAPPENS IF BOTH MY PARTNER AND I CARRY THE SAME GENETIC ABNORMALITY?

You still have the opportunity to have a healthy baby through [preimplantation genetic testing \(PGT-M\)](#). This advanced method, which is carried out only in conjunction with IVF treatment, enables us to select embryos that do not carry a specific genetic disorder.

HOW LONG DOES THE PANDA TEST TAKE?

In most cases, results are ready within five weeks of blood collection.



HOW MUCH WILL PANDA REDUCE THE RISK OF HAVING A DISABLED CHILD?

The PANDA Carrier test can reduce the likelihood of a child being born with an inherited disease caused by hidden gene mutations by 10-20 times.

re p r o m e d a

Start Your Journey with Us

We wish you the best of luck and a healthy baby. Let PANDA be your partner in building your family's bright and healthy future.

+420 545 212 212
brno@repromeda.cz

+420 553 611 611
ostrava@repromeda.cz

www.repromeda.com
www.pandatest.cz/en